

CUTTING EDGE TECHNOLOGY

POWELL CNC

SALES & SERVICE



POWELL H1000 FLATBED UV PRINTER

WWW.POWELL-CNC.COM

POWELL CNC

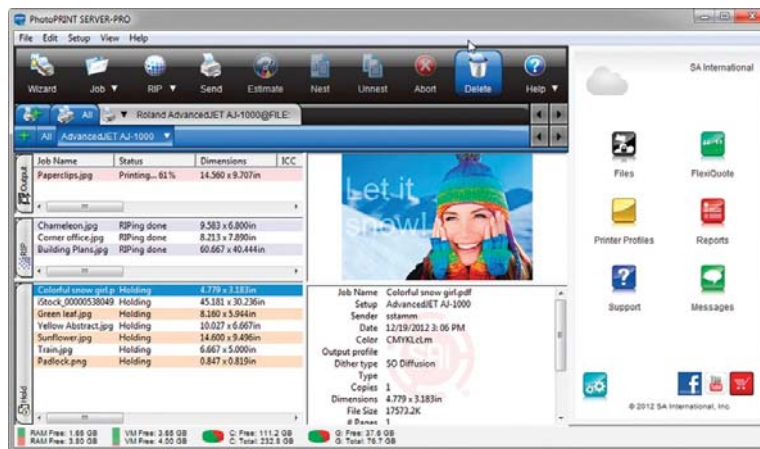
SALES & SERVICE

RICOH GREY SCALE PRINT HEAD



RICOH

SAI PHOTO PRINT INTERFACE



FEATURES

- 2-8 Ricoh greyscale print heads
- 7pl-21pl variable ink droplet printing
- 2pt typeface can be clearly printed
- Dual precision ballscrew transmission
- SAI Photo Print RIP Software
- Print speeds up to 42²m hour
- Colour Options C M Y K Lc Lm W V
- CE Mark certified machine
- Widely available spare parts
- Compatible with virtually any design software, Photoshop, Illustrator, InDesign etc
- Rigid media up to 100mm
- Automatic media thickness detection
- Zoned vacuum table for media hold down
- Lenovo workstation onboard for compact design
- 12 month warranty (Excluding Print heads)

POWELL CNC

SALES & SERVICE



DESCRIPTION

The H1000 is particularly tailored for small and medium processing enterprises to meet their requirement of high speed and ultra precision production. Configured with 2-8 Ricoh Gen5 print heads, our flatbed LED UV printer can accomplish high speed printing with ultra precision in 6 colours and up to 1200 x 1200 dpi. Having the production speed up to 43m²/h (2 print heads rows), our flatbed printer is capable of meeting the needs of high volume production.

The H1000 LED UV flatbed printer is capable of 24/7 production and can be easily operated by one operator. The transmission is by dual precision ground ballscrew, maintaining a repeated accuracy of 0.02 x 0.02mm over the working area.

The UV flatbed printer also had the optional modes of white ink and varnish to further enhance the quality and multi-functionality of the H1000.

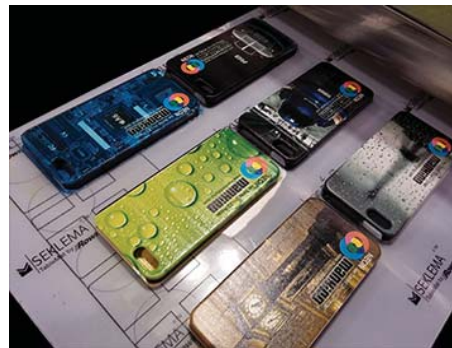
POWELL CNC

SALES & SERVICE

DIRECT TO PARTS



DIRECT TO BOARD



APPLICATIONS

- Exhibition Display
- Promotional items
- Organic materials such as wood & textiles
- Machine dials
- Printing on foamed panels
- Printing on re-board honeycomb
- Printing on Self adhesive and one way vinyl
- Direct to garment
- Printing white on black items
- Display and POS solutions
- Direct to substrate printing
- Reverse printing for lightbox
- Safety and site signage

POWELL CNC

SALES & SERVICE



STANDARD CONFIGURATION

- H1000 Printer
- 2 x Ricoh print head for CMYK output
- PC, monitor, keyboard and mouse
- 2 x Standard LEDUV lamps (600hrs)
- High precision ball screw drive system
- Zoned vacuum table (reversible)
- Media height up to 100mm with autodetect
- High speed shuttle printing
- SAI Photoprint RIP Software
- Media location pins
- Bulk ink delivery system
- Delivery (not unloading)
- Training
- 12 month warranty (excluding print heads)

SPECIFICATION

| | | | |
|------------------|---|----------|--------------|
| MODEL | H1000 | | |
| TRAVELLING AREA | RICOH GEN5 PRINT HEADS | | |
| QTY PRINT HEADS | 2-8 HEADS | | |
| RESOLUTION | 635 * 1800 DPI | | |
| PRINT MODE | UNI DIRECTIONAL & BIDIRECTIONAL | | |
| PRINT SPEED | PRODUCTION | QUALITY | HIGH-QUALITY |
| | 43 m2/hr (2 Rows) | 35 m2/hr | 29 m2/hr |
| MAX MEDIA WIDTH | 2440 x 1220mm | | |
| MAX MEDIA HEIGHT | 100mm | | |
| MEDIA TYPE | RIGID AND FLEXIBLE FLAT MATERIALS | | |
| INK | ENVIRONMENTALLY FRIENDLY UV CURABLE INKS (VOC FREE) | | |
| INK COLOUR | C, M, Y, K, Lc, LM, W, V | | |
| IMAGE FORMAT | ADOBE POSTSCRIPT LEVEL 3, PDF, JPEG, TIFF, EPS, AI | | |
| MACHINE SIZE | 4.67M x 2.51M x 1.38M | | |
| POWER CONSUMP. | 8.3KW (20A) | | |
| POWER SUPPLY | 40A SINGLE PHASE | | |
| CERTIFICATION | CE, FCC | | |
| RIP SUPPORT | PHOTO PRINT (ONYX, CALDERA, OPTIONAL) | | |
| UV CURING | UV LED(WATER COOLING) | | |
| INTERFACE | HIGH SPEED USB | | |
| ENVIRONMENT | SEPARATE WORKROOM, CLEAN, WELL VENTILATED, AVOID DIRECT SUNLIGHT, TEMP 18-30 HUMID 30-70% | | |